

# **G**-fix

**FIXINGS & FASTENERS**



Office: (01) 820 1067

Mob: 087 329 9198

Email: [gfixings@gmail.com](mailto:gfixings@gmail.com)

[www.g-fix.ie](http://www.g-fix.ie)



# INDEX

ITEM	PAGE
ANCHORS & CAVITY WALL FIXINGS .....	1
CONCRETE ANCHORS .....	2
CAVITY WALL FIXINGS.....	3
HAMMER FIXINGS.....	4
DRILL BITS .....	5
HOLESAWS, ARBOURS & CUTTING DISCS.....	6
BLADES.....	7
WOOD BITS.....	8
SCREWS.....	9
SELF DRILLING SCREWS .....	10
MACHINE SCREWS .....	11
CABLE TIES .....	12
GAS NAIL GUNS / FIXINGS.....	13
HEX SETS.....	14
NUTS, BOLTS & WASHERS .....	15
DRILLS & JIGSAWS .....	16
SANDERS & ROUTERS.....	17
PLANERS & MITRE SAWS .....	18
TRANSFORMERS & REELS .....	19
BRACKETS & NAILS.....	20
TAPES & ADHESIVES.....	21
LOCKS, CHAIN & ROPE .....	22
SAFETY EQUIPMENT.....	23

# ANCHORS / CAVITY WALL FIXINGS / BOLTS

## DROP IN ANCHORS

Sizes M6 M8 M10 M12,

Available in stainless steel upon request



## THROUGH BOLTS

SIZE	SIZE	SIZE	SIZE
6/6/45	8/10/60	10/15/70	12/15/75
6/10/60	8/12/75	10/20/90	12/17/90
6/12/80	8/16/90	10/50/120	12/20/110
6/15/90	8/20/115	10/60/150	12/24/160
	8/24/130		12/25/180

Available in stainless steel upon request



## LOOSE BOLTS

SIZE	SIZE	SIZE	SIZE	SIZE
6/10/50	8/10/60	10/10/70	12/10/90	16/15/120
6/25/65	8/25/75	10/25/90	12/25/110	16/30/130
6/40/80	8/40/90	10/50/110	12/40/120	16/60/160
		10/75/140	12/60/140	



## PROJECTION BOLTS

SIZE	SIZE	SIZE	SIZE	SIZE
6/10/55	8/10/65	10/15/85	12/15/105	16/15/130
6/25/75	8/25/85	10/30/100	12/30/125	16/35/150
6/60/110	8/40/100	10/60/130	12/50/145	16/75/190
	8/60/120	10/80/150	12/75/170	
	8/80/140			

Also available in eye type





# CONCRETE ANCHORS

## ANCHOR BOLTS

SIZE	SIZE	SIZE	SIZE	SIZE
M6X50	8X60	10X60	12X75	16X100
M6X75	8x75	10X75	12X100	16X150
M6X100	8x100	10X100	12X130	
M6X130	8x150	10X130	12X150	
M6X150		10X150	12X200	



## CHEMICAL ANCHORS & MORTAR

### SIZE CAPSULE

M10	M12,	M16	M20	M24
-----	------	-----	-----	-----

### STUDDS

M8X110	M10X130	M12X160	M16X190	M20X260
--------	---------	---------	---------	---------

Also available in stainless steel



## CHEMICAL MORTAR & CAULKING GUN

### SIZE

AC PLUS 160 ML	STANDARD CAULKING GUN
AC PLUS 300 ML	STANDARD CAULKING GUN
AC PLUS 410 ML	EX LARGE CAULKING GUN



# CAVITY WALL FIXINGS

## SPRING TOGGLES

SIZE

M5/50    M5/75    M5/100    M6X75



## HOLLOW WALL ANCHORS & HWA GUN

SIZE

M5/37/45 SINGLE PLASTER BOARD

M5/53/60 SINGLE PLASTER BOARD

M5/60/70 DOUBLE PLASTER BOARD

SIZE

M6/37/45 SINGLE PLASTER BOARD

M6/53/60 SINGLE PLASTER BOARD

M6/60/70 DOUBLE PLASTER BOARD



## WORM PLASTER BOARD SCREWS & SPEAR FIXING

SIZE: 3.5/12/32

SIZE: 3.5/13/36



# HAMMER FIXINGS



SIZE	SIZE	SIZE
6X40	8X60	10X100
6X50	8X80	10X120
6X60	8X100	10X135
6X80	8X120	10X140
	8X135	10X160

## COACH SCREWS



SIZE	SIZE	SIZE	SIZE
M6X30	M8X30	M10X40	M12X50
M6X40	M8X40	M10X50	M12X60
M6X50	M8X50	M10X60	M12X70
M6X60	M8X60	M10X70	M12X80
M6X70	M8X70	M10X80	M12X100
M6X80	M8X80	M10X90	M12X120
M6X100	M8X100	M10X100	M12X140
	M8X120	M10X120	M12X120
	M8X150	M10X150	M12X160
		M10X180	M12X180

# DRILL BITS

## HSS & COBALT



SIZE	SIZE	SIZE
2MM	6MM	8.5MM
3MM	6.5MM	10MM
4MM	7.0MM	11MM
5MM	8.0MM	12MM

## TAPER SHANK / REDUCED SHANK HSS



SIZE	SIZE	SIZE
14MM	16MM	18MM

Also available in imperial

## TILE CERAMIC BITS PORCELAIN BITS

SIZE	SIZE	SIZE	SIZE
3.0MM	7.0MM	5.0MM	7.0MM
4.0MM	8.0MM	5.5MM	8.0MM
5.0MM	10.0MM	6.0MM	10.0MM
6.0MM		6.5MM	



## SDS DRILL BITS

SIZE	SIZE	SIZE	SIZE	SIZE
4.0X110	6.0X160	14X210	8.0X460	8.0X600
5.0X110	8.0X160	16X210	10.0X460	10.0X600
5.5X110	10.0X160	18X210	12.0X460	12.0X600
5.5X160	12.0X160	20X210	16.0X450	20.0X1000
			20.0X450	25.0X1000
			25.0X450	



# HOLE SAWS ARBOURS CUTTING DISCS

## HOLESAWS

SIZE	SIZE	SIZE
16MM	38MM	76MM
19MM	40MM	89MM
20MM	48MM	96MM
25MM	50MM	101MM
32MM	64MM	125MM



## ARBOURS



SMALL 16-25



LARGE 26-150



PILOT BITS 6MM

## CUTTING DISCS, GRINDING FOR ANGLE GRINDERS & CUT OFF SAWS

SIZE  
 4 1/2" STANDARD CUTTING / GRINDING  
 4 1/2" STAINLESS STEEL CUTTING

SIZE  
 9" CUTTING / GRINDING  
 14" CUTTING DISC









# WOOD BITS

## SPADE WOOD BITS



SIZE

6 X 150

TO

40 X 150

SIZE

8 X 360

TO

38 X 360

## AUGER WOOD BITS



SIZE

16 X 100

TO

32 X 100

SIZE

6 X 235

TO

32 X 235

16 X 155

TO

32 X 155

8 X 450

TO

25 X 450

## WOOD DRILL BITS

SIZE

2MM TO 12MM



## COUNTERSINK BITS

SIZE

13MM TO 16MM



# SCREWS

## WOOD SCREWS CSK/POZI CSK SLOT ZINC



SIZE	SIZE	SIZE	SIZE
3.5 X 13	4.0 X 15	4.5 X 20	5.0 X 20
TO	TO	TO	TO
3.5 X 50	4.0 X 80	4.5 X 70	5.0 X 100

## WALL PLUGS



SIZE	SIZE
6.0 X 30	YELLOW 5.0
TO	RED 5.5
6.0 X 200	BROWN 6.0

Also available in stainless steel

## BRASS WOOD SCREWS CSK SLOT / POZI / ROUND HEAD SLOT

SIZE	SIZE	SIZE	SIZE
2 X 3/8	4X3/8	6 X 1/2	10 X 1
TO	TO	TO	TO
2 X 5/8	4X1	6 1 1/2	10 X 3



SIZE	SIZE	SIZE	SIZE
3 X 1/2	6 X 1/2	8 X 3/4	12 X 1 1/2
TO	TO	TO	TO
3 X 5/8	6 X 1 1/2	8 X 2	12 X 4



# SELF DRILLING SCREWS

## HEX HEAD

SIZE	SIZE	SIZE	SIZE LIGHT STEEL	SIZE LIGHT STEEL
STANDARD	STANDARD	STANDARD	WASHER TYPE	WASHER TYPE
4.8 X 13	5.5 X 19	6.3 X 50	4.8 X 16	5.5 X 22
TO	TO		TO	TO
4.8 X 19	5,5 X 50		4.8 X 25	5.5 X100

SIZE LIGHT STEEL

WASHER TYPE

6.3 X 32

TO

6.3 X 75

Sizes available in stainless steel

SIZE HEAVY DUTY STEEL

WASHER TYPE

5.5 X 22

TO

5.5 X 100



## WAFER HEAD SELF DRILLER    CSK SELF DRILLER    MAGNETIC HOLDERS



SIZE

4.2 X 13



SIZE

4.2 X 19

4.2 X 25



SIZE

SIZE 6MM

8MM

# MACHINE SCREWS

## CSK / PH / POZI / SLOT ZINC /STAINLESS STEEL

### SIZE

M2X12 PH/CSK	M4 X 12 PH/CSK	M5X12 PH/CSK	M6X16 PH/CSK
M3X 10 PH/CSK	M4X20 PH/CSK	M5X16 PH/CSK	M6X20 PH/CSK
M3X12 PH/CSK	M4X25 PH/CSK	M5X20 PH/CSK	M6X25 PH/CSK
M3X16 PH/CSK	M4X30 PH/CSK	M5X25 PH/CSK	M6X30 PH/CSK
M3X20 PH/CSK		M5X30 PH/CSK	
M3X25 PH/CSK			



## 3.5 ELECTRICAL SOCKET SCREWS BRASS / NICKLE

### SIZE

3.5 X 25	3.5 X 50	3.5 X 75	3.5 EXTENSION 35MM LONG
3.5 X 40	3.5 X 60		



## M4 PH BRASS MACHINE SCREWS & M4 NUTS BRASS / WASHER

### SIZE

M4 X 6	M4 X 16	M4 X 35	M4 X 70
M4 X 8	M4 X 20	M4 X 40	M4 X 80
M4 X 10	M4 X 25	M4 X 50	
M4 X 12	M4 X 30	M4 X 60	



## MACHINE TAPS

## TAP WRENCHES No. 1 & No. 2

### SIZE

3mm	4mm	5mm	6mm	8mm	10mm	12mm
DRILL SIZE						
2.5mm	3.3mm	4.2mm	5mm	6.8mm	8.5mm	10.2mm



## GUTTER BOLTS

M6X8	M6X16	M6X25	M6X40	M6X60
M6X12	M6 X 20	M6X30	M6X50	M6X80

# CABLE TIES & GUNS

## NYLON CABLE TIES CABLE TIE GUN



SIZE	SIZE	SIZE	SIZE	SIZE
150 X 3.6	290 X 4.8	430 X 4.8	520 X 7.6	780 X 9.0
150 X 4.8	290 X 7.8	430 X 9.0	610 X 9.0	920 X 9.0
200 X 3.6	365 X 4.8	450 X 7.6	630 X 4.8	1020 X 9.0
200 X 4.8	365 X 7.8	520 X 4.8	710 X 9.0	1030 X 13

## CABLE TIE GUN

NYLON CABLE TIE GUN SIZE 3.6 TO 7.6



## STAINLESS STEEL CABLE TIES CABLE TY GUN CABLE TY KNOCK IN

SIZE	SIZE	SIZE
124 X 4.6	680 X 4.6	360 X 7.9
200 X 4.6	835 X 4.6	520 X 4.6
360 X 4.6	200 X 7.9	520 X 7.9



Cable TY Gun Size 4.6 to 7.9

Cable TY Knock In Size 4.6 to 7.9





# NAIL GUNS & FIXINGS

## PLUSA 800E NAIL GUN CONCRETE NAILER

NAIL SIZE: 16mm - 38mm C/W GAS

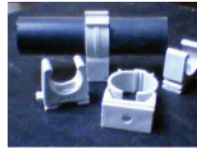


CAPACITY - LSF ( LOW SMOKE FUME)  
 Fuel Cell Life: 600 shotS  
 Battery Technology: Lithium  
 Battery Voltage: 3.7V  
 Battery Capacity: 2.2Ah  
 Shot Per Charge: 1,500 min / up to 3,000  
 Charge Time: 90 mins (25 mins = 500 pins)

### PLASTIC CONDUIT CLIP

SIZES

13mm - 16mm      19mm - 25mm



## CABLE TY BASES

SIZE: 3.6 to 7.8 CABLE TIE 2 DIRECTIONS



### CABLE BOW SINGLE / DOUBLE 3X1.5SQ

SIZE SINGLE MAX CABLE 3x 1.5 sq 8

DOUBLE MAX CABLE 3 x 1.5 sq 16



## FIRST FIX TIMBER FRAMING NAILER

### CAPACITY

- 51mm to 90mm nails accepted
- 2 Brad nails per second cycle rate
- 5,000 nails per battery charge approx
- 1,100 nails per fuel cell approx
- 105.4dB noise rating
- 70 nail max magazine capacity
- 2 hour approx charge time
- 3.6kg net weight



30'

### CAPACITY

19-64MM Brad nails

- 1000 brad nails per hour/4000 brads a day
- 100 nail magazine capacity
- 1,000 brad fuel cell life
- 4000 fixings per charge



## NAILS

### SIZE

- 51MM SMOOTH BRIGHT / GALV NAILS
- 63MM SMOOTH BRIGHT / GALV NAILS
- 75MM SMOOTH BRIGHT / GALV NAILS
- 90MM SMOOTH BRIGHT / GALV NAILS
- AVAILABLE IN CLIP AND FULL ROUND NAILS

### SIZE

- 19MM ANGLE
- 32MM ANGLE
- 38MM ANGLE BRAD
- 4MM ANGLE BRAD



### SIZE

- 50MM ANGLE
- 64MM ANGLE
- 50MM STRAIGHT





# HEX SETS

## HEX SETS 8.8

### HEX SETS ZINC

SIZE	SIZE	SIZE	SIZE	SIZE	SIZE
M5 X 12	M6 X 12	M8 X 16	10 X 20	12 X 25	16 X 30
M5 X 16	M6 X 16	M8 X 20	10 X 25	12 X 30	16 X 40
M5 X 20	M6 X 20	M8 X 25	10 X 30	12 X 40	16 X 50
M5 X 25	M6 X 25	M8 X 30	10 X 40	12 X 50	16 X 60
M5 X 30	M6 X 30	M8 X 40	10 X 50	12 X 60	16 X 80
M5 X 40	M6 X 40	M8 X 50	10 X 60	12 X 80	16 X 100
M5 X 50	M6 X 50	M8 X 60	10 X 70	12 X 100	16 X 120
	M6 X 60	M8 X 80	10 X 80	12 X 120	16 X 130
	M6 X 80	M8 X 100	10 X 90	12 X 130	16 X 150
		M8 X 120	10 X 100	12 X 150	16 X 180
		M8 X 150	10 X 120		
			10 X 130		
			10 X 150		

AVAILABLE IN STAINLESS STEEL POA



# NUTS, BOLTS & WASHERS

## CARRIAGE BOLTS - CUP SQUARE

SIZE	SIZE	SIZE	SIZE	SIZE
M6 X 25	M6 X 70	M8 X 25	M10 X 30	M12 X 70
M6 X 30	M6 X 80	TO	TO	TO
M6 X 40	M6 X 100	M8 X 200	M10 X 240	M12 X 300
M6 X 50	M6 X 120			



## NUTS

### HEX NUTS / NYLOCK NUTS / SQUARE

SIZE: M4, M5, M6, M8, M10, M12, M16



### DOME NUTS / WING NUTS

SIZE: M6, M8, M10, M12



## WASHERS

### STANDARD WASHER



M3, M4, M5, M6, M8, M10, M12

AVAILABLE IN STAINLESS STEEL



### STEEL SHAKE PROOF WASHER

M6, M8, M10

AVAILABLE IN STAINLESS STEEL

### PENNY WASHER



M4 X 32

M6 X 30

M10 X 40

M5 X 25

M8 X 35

M12 X 45



### SPRING WASHER

M6, M8, M10, M12, M16



### EDPM WASHER

M2 X 14

M2.5 X 16

M3.5 X 18

M3.5 X 25

# POWER TOOLS

## CORDLESS DRILLS

SIZES

3.6 VOLT

14.4 VOLT

18 VOLT COMBI DRILL

36 VOLT SDS HAMMER ACTION



## 110V SDS HAMMER DRILLS

GBH 2-20D

GBH 2-26 DRE

GBH 4-32 DFR

CONTACT FOR DETAILS



## JIGSAWS 110V & 220V

### GST 90 BE Professional

Top-class convenience in the entry level class

The most important data

Rated power input 650 W

Cutting depth in wood 90 mm

Cutting depth in aluminium 20 mm



### GST 160 CE Professional

Superb precision: complete control for precise cuts!

The most important data

Rated power input 800 W

Cutting depth in wood 160 mm

Cutting depth in aluminium 20 mm



# POWER TOOLS

## SANDERS 110V & 220V



### GEX 125-1 AE Professional

Comfortable sanding in any work position

The most important data

Rated power input	250 W
Sanding pad diameter	125 mm
Oscillating circuit diameter	2,5 mm



### GEX 150 Turbo Professional

Three tools in one

The most important data

Rated power input	600 W
Sanding pad diameter	150 mm
Oscillating circuit diameter	4,5 mm



### GSS 140 A Professional

Every type of sanding sheet sits perfectly with Easy-Fit

The most important data

Rated power input	180 W
Sanding plate, width	113 mm
Sanding plate, length	105 mm



### GSS 280 AVE Professional

Top-class surface quality and the lowest vibration

The most important data

Rated power input	350 W
Sanding plate, width	114 mm
Sanding plate, length	226 mm

## ROUTERS 110V & 220V

### GOF 1250 CE Professional

The handy precision router with high torque

Rated power input	1.250 W
No-load speed	10.000 – 24.000 rpm
Bit holder	6 – 8,0 mm



### GOF 1600 CE Professional

The powerful precision plunge-cutting router with LED illumination

Rated power input	1.600 W
No-load speed	10.000 – 25.000 rpm
Bit holder	8 – 12,7 mm





# POWER TOOLS

## WOOD PLANERS 110V & 220V

### GHO 15-82 Professional

Best performance in the entry-level class

Rated power input	600 W
Planing width	82 mm
Adjustable depth of cut	0 – 1,5 mm



### GHO 26-82 Professional

The handy planer with lots of power

Rated power input	710 W
Planing width	82 mm
Adjustable depth of cut	0 – 2,6 mm



## MITRE SAWS 110V & 220V

### GCM 8 SDE Professional

8" sliding mitre saw with variable speed and dual bevel capability

Saw blade diameter	216 mm
Mitre setting	52 ° L / 60 ° R
Incline setting	47 ° L / 47 ° R



### GTM 12 JL Professional

Multi-talented tool with 100% precision

Saw blade diameter	305 mm
Mitre setting	48 ° L / 48 ° R
Incline setting	47 ° L / 2 ° R



# EXTENSION LEADS

## TRANSFORMERS & REELS

### KVA TRANSFORMERS

#### 2.2 KVA C/W 2 OUTLET



#### 3 KVA C/W 2 OUTLETS



### 25M & 40 M EXTENSION LEADS



### 25M & 40 M 110V EXTENSION REEL



### 110V LOOSE LEADS



### 110V PLUGS / SOCKETS





# BRACKETS & NAILS

## BRACKETS & NAILS

### STRETCHER BRACKETS

BOX QTY 100



### ANGLE BRACKETS

19 X 19

BOX QTY 100



### ANGLE BRACKET

50 X 50

BOX QTY 100



### DEWALT NAIL PINS STRAIGHT / ANGLED

### CONCRETE NAILS WITH OR WITHOUT WASHER



### 16 GAUGE

### WASHER NAILS

### NAILS

32MM GALV	BOX QTY 2,200
38MM GALV	BOX QTY 2,200
45MM GALV	BOX QTY 2,200
50MM GALV	BOX QTY 2,200
63MM GALV	BOX QTY 2,200

SIZE	SIZE
3.7 X 22	3.7 X 62
3.7 X 37	3.7 X 72
3.7 X 42	3.7 X 82
3.7 X 47	3.7 X 97
3.7 X 54	

SIZE
3.0 X 40
3.0 X 50
3.0 X 65
3.5 X 85
3.5 X 100

### ROUND WIRE NAILS 15KG / 20 KG

50/60/75/100mm

SMOOTH BRIGHT OR GALV

### EXPRESS NAILS SIZES

M6x40/50/60/80

M8 X 70/90/110/130/150



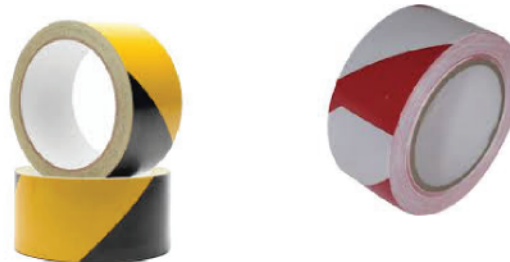
# TAPES & ADHESIVES

**PVC ELECTRICAL TAPE SIZE 19 x 19  
BS STANDARD**



ALL COLOURS AVAILABLE

**HAZARD WARNING TAPE ADHESIVE 50x33**



YELLOW & BLACK RED & WHITE GREEN & WHITE

**UNDER GROUND WARNING TAPE**

COLOUR	WORDING	SIZE
YELLOW	ELECTRICAL CABLE	150 X 365
BLUE	WATER PIPE	150 X 365
YELLOW	GAS MAIN	150 X 365
YELLOW	STREET LIGHTING	150 X 365
RED	SEWERS	150 X 365



**DOUBLE SIDED TAPE SIZE 19x19 50x50**



## SEALANTS

**SILICONE - GENERAL PURPOSE AVAILABLE IN CLEAR / WHITE / IVORY**

General Purpose Silicone is a high modulus silicone sealant that adheres to most smooth and non-porous materials. Contains an anti-fungal compound to prevent mould growth in areas of high humidity. Forms a permanently flexible rubber seal.



**BATH / SANITARY SILICONE AVAILABLE IN CLEAR / WHITE / IVORY**

500 Bath & Sanitary Silicone is a premium quality high modulus acetoxy cure silicone sealant that contains a high level of powerful anti-fungal compound. Typically used in areas of high humidity, such as bathrooms and Kitchens



# LOCKS CHAINS ROPES

## LOCKS KEY ALIKE OR KEY DIFFERENT

SIZE: 20mm / 25mm / 32mm / 40mm  
50mm / 60mm / 70mm  
Also available in long shank



## MARINE QUALITY PADLOCKS

SIZE: 44mm / 51mm / 64mm  
Also available in long shank



## SHUTTER LOCKS SOLID

SIZE 80MM / 90MM



## HEAVY DUTY PADLOCKS

SIZE 45MM / 50MM / 64MM  
Also available in long shank



## COMBINATION LOCKS



SIZE  
30MM  
40MM  
50MM  
70MM  
Available in marine quality



SIZE  
30MM  
40MM  
50MM  
70MM  
Available in marine quality



SIZE  
90CM  
180CM

## ROLLS OF CHAIN



SIZES	CHAIN LINK	PER ROLL
3m	24 x 12.8	50 METER
4m	28 x 15.3	70 METER
6m	40 x 23	35 METER
8m	50 x 30.8	22 METER
10m	60 x 37.8	13 METER

## POLY ROPE



SIZES  
M6 X 200      M10 X 200    M16 X 200  
M8 X 200      M12 X 200    M20 X 200  
Nylon rope also available

# SAFETY EQUIPMENT

## SAFETY GLASSES



## SAFETY GOGGLES



## SAFETY GLOVES RIGGER

SIZES

SMALL / MEDIUM / LARGE



## SAFETY GLOVES CUT RESISTANT

Sizes

SMALL / MEDIUM/LARGE/EX LARGE



## DUST MASKS DISPOSABLE



## RESPIRATOR MASKS



## EAR PROTECTORS



## RAIN GEAR WET SUITS

Available In

Medium /large/ex Large



## SAFETY HELMETS

AVAILABLE IN ALL COLOURS



## WHITE COVERALLS ZIP & HOOD

Available In

Medium/large/ Ex Large



## SAFETY BOOTS

SIZE 9,10, 12







[www.g-fix.ie](http://www.g-fix.ie)



Office: (01) 820 1067

Mob: 087 329 9198

Email: [gfixings@gmail.com](mailto:gfixings@gmail.com)